

FORZA



**Hydraulic Pullers
Self-centering Series
1300H & 1300TH
3300H & 3300TH**

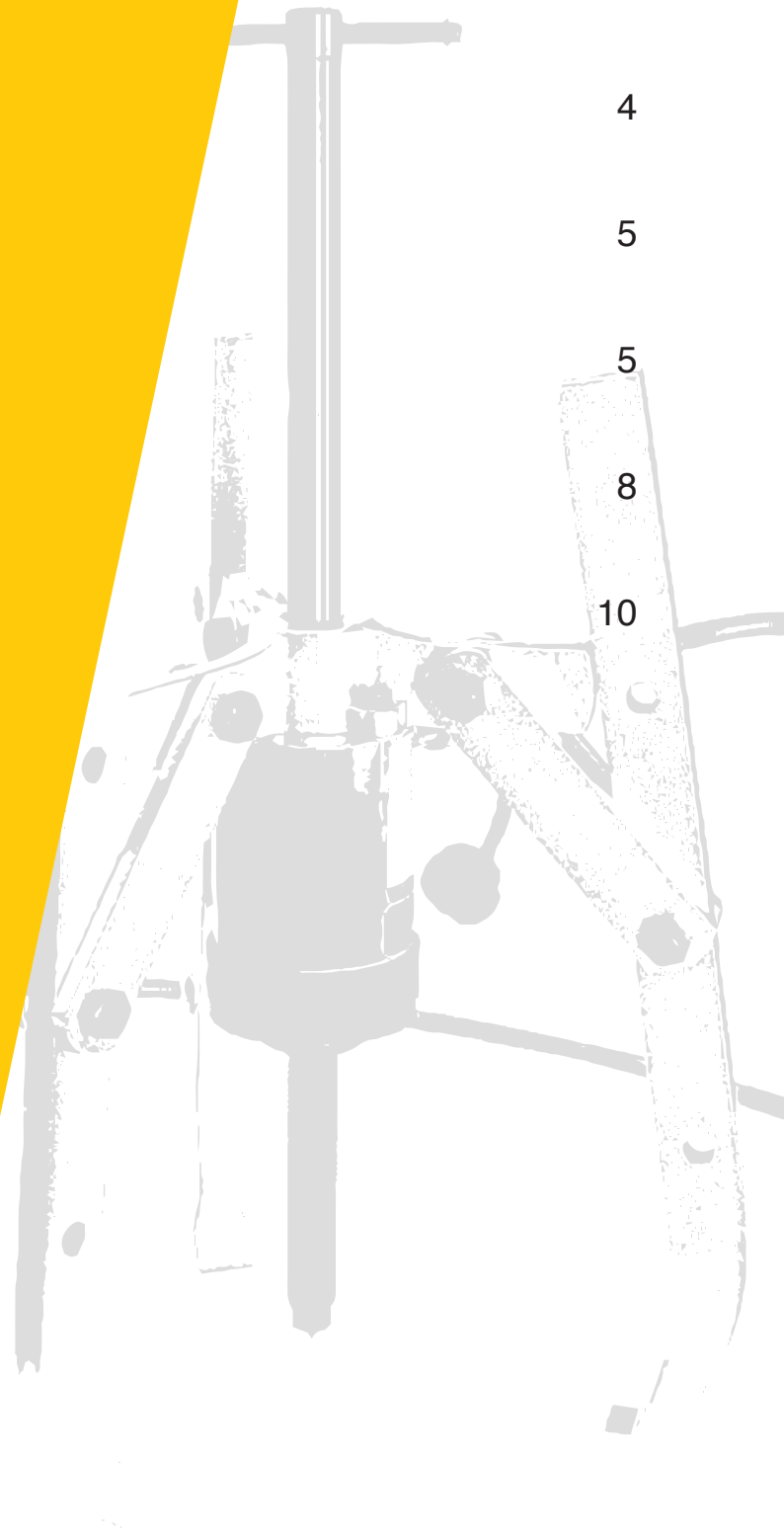
User's Manual



**1300H - 1300TH
3300H - 3300TH**

ÍNDICE

1. Hydraulic part	4
2. Technical features	5
3. Puller dimensions	5
4. General instruccions	8
5. Mechanical Part, Breakdown	10



■ 1. Hydraulic Part

Hydraulic part:

The hydraulic part of the puller is made up of:

The hydraulic cylinder which is the force creating part of the puller. It is a single acting cylinder with spring loaded return.

The pump is the part that brings pressure to the cylinder. Forza supplies it together with the gauge and hose (1,8 m long).

Pumps can deliver up to 700 bars, for additional safety DO NOT operate with pressure beyond the red zone.

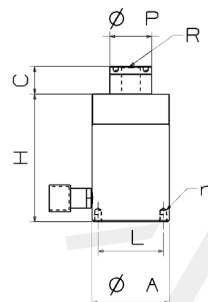
Pullers might end up not perfectly balanced when being set up resulting into uneven load between the arms.

Complete Hydraulic equipment



Reference	TON	Weight
00910	10	11
00918	20	16
00930	30	19
00952	60	43
00995	100	76

Hydraulic cylinders



Reference	ØA	Stroke	H	TON	Weight	L	r	Spindle	R
09101	70	25	81	10	2,5	50,8	5/16"UNC	111083	3/4"UNF 16h
09181	99	48	160	20	7,5	82,6	3/8"UNC	111883	1"UNC 8h
09301	114	63	178	30	10,5	92,1	3/8"UNC	113083	1-1/4"UNC 7h
09521	159	75	235	60	31	130,2	1/2"UNC	115283	1-5/8"UNS 5,5h
09951	212	76	254	100	65	177,8	5/8"UNC	119583	2-1/2"UN 8h

Hydraulics pumps

Reference	Weight	Bar. Max	Fuerza de bambeo Kg.	TON
09542	3,7	700	35,4	4
09102	8,5	700	50	10
09182	8,5	700	50	20-30
09522	12	700	47	60
09952	12	700	47	100

■ 2. TECHNICAL FEATURES

Oscilating jaws pullers. External use.

2 and 3 legs.

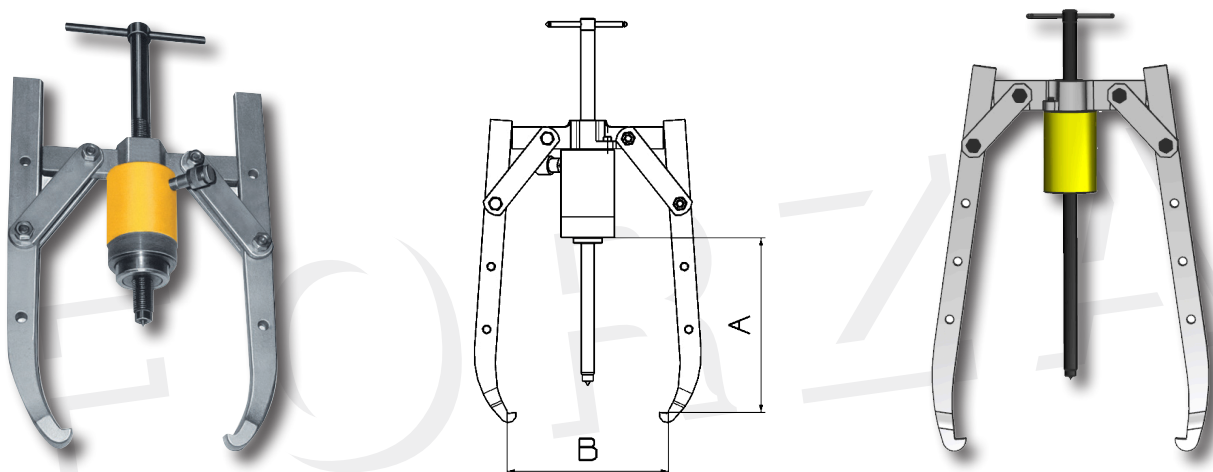
Two different types of jaws: depending on the length: Long jaws (Leg with 3 holes) or EXTRA Long jaws (leg with 4 holes).

Forged and tempered jaws.

In the extractors the mechanical part is denominated 1300H or 1300TH; When they are complete they include the hydraulic part is denominated 3300H and 330TH.

■ 3. PULLER DIMENSIONS

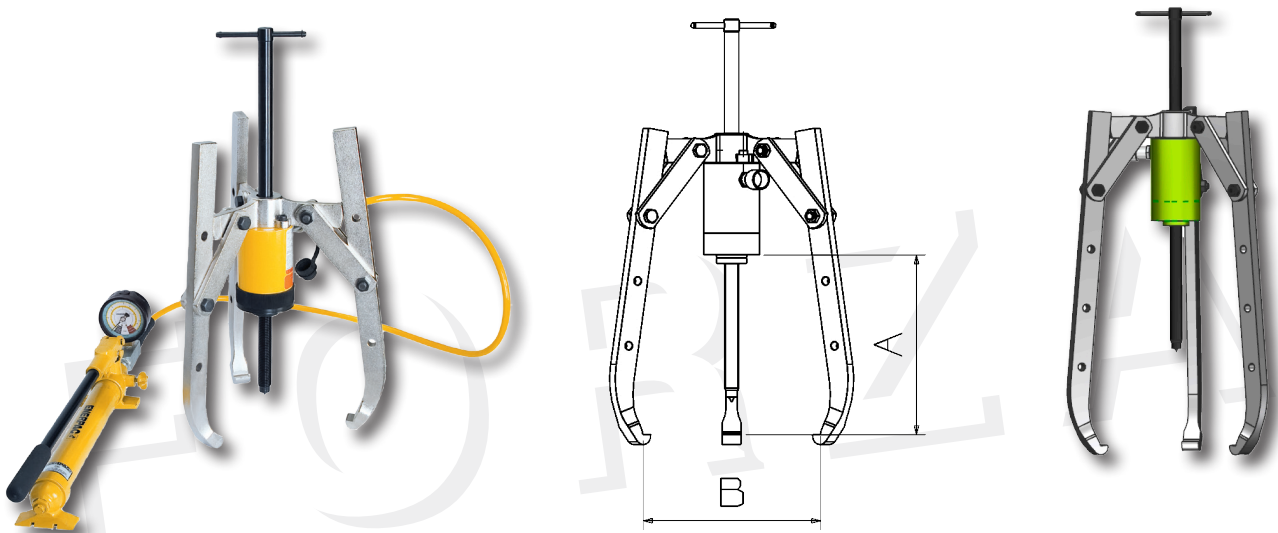
2 jaws oscilating puller



Los extractores normales tienen 3 agujeros en las patas, mientras que los extractores X tienen 4 agujeros.

Reference Mecanic Part	A	B	Weight Part. Mecánico	Ref. Part. hydraulic	Ton.	Ref. Hidráulic Part	Ton. total
1318H	320	480	18	918	20	3318H	34
1318HX	435	540	20	919	20	3318HX	36
1330H	410	650	30	930	30	3330H	49
1330HX	535	720	34	931	30	3330HX	53
1352H	710	980	66	952	50	3352H	109
1352HX	860	1080	72	952	50	3352HX	76

3 jaws oscilating puller

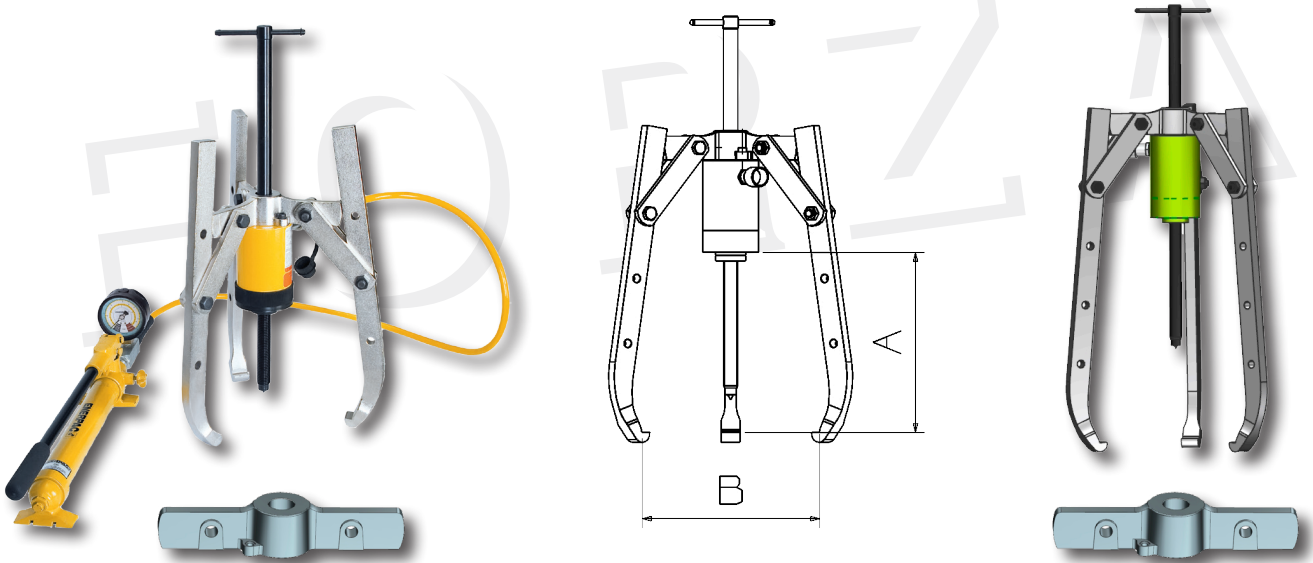


Ref. Mecanic Part	A	B	Comb. 2/3 patas	Weight Part. Mecánico	Ref. Part. hydraulica	Ton.	Ref. Hidráulic Part	Ton. total
1310TH	320	350	YES	9	910	10	3310TH	20
1310THX	400	410	YES	10	910	10	3310THX	30
1318TH	320	480	NO	23	918	20	3318TH	39
1318THX	435	540	NO	26	918	20	3318THX	42
1330TH	410	680	NO	40	930	30	3330TH	59
1330THX	535	720	NO	46	930	30	3330THX	65
1352TH	710	980	NO	87	952	50	3352TH	130
1352THX	860	1080	NO	96	952	50	3352THX	139

El extractor 1310TH y 1310THX pueden montar 2 y 3 patas.



2 and 3 jaws puller set



Referencia	A	B	Peso P. Mecánica	Ref. P. hidráulica	Ton.	Ref. Hidráulic Part	Ton. total
1318THCO	340	480	26	918	20	3318THCO	41
1318THXO	435	540	28	918	20	3318THXO	44
1330THCO	420	680	46	930	30	3330THCO	64
1330THXO	525	720	51	930	30	3330THXO	70
1352THCO	750	980	96	952	50	3352THCO	138
1352THXO	850	1080	104	952	50	3352THXO	147

■ 4. GENERAL ISTRUCCIONS



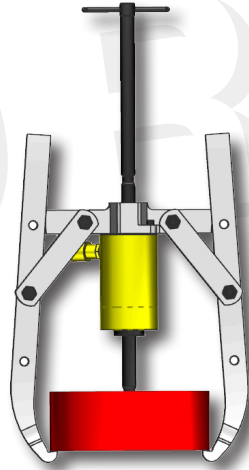
- 1- Make sure the spindle is cleaned and greased before using.
- 2- Make sure the axe has a centre hole. If not, use a point protector
- 3- Make sure the jaws/extenders are properly centered.
- 4- Personal protective equipment must be worn at all times.
- 5- Stretch the spindle manually.
- 6- Use the hydraulic pump for making the strength. Monitor constantly the pressure and puller deformation.



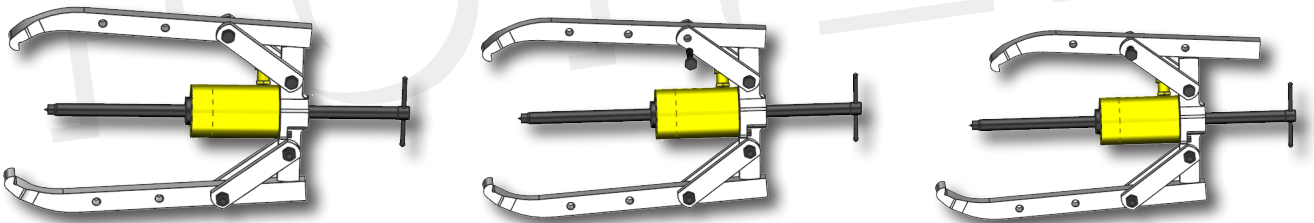
Specific instructions for big pullers

- Use a crane and slings for unloading the puller.
 - Thanks to the slings, the puller can work horizontally.
 - For changing the position, from horizontally to vertically, incline the puller slowly and carefully.
 - Please keep attention once lifting the puller vertically as the legs will tend to close.
- Keeping the screws of the legs tighten the jaws closing movement will be slowly.
- Work slowly with the puller in order to prevent any unexpected displacement.
 - Take always into account the important weight of the complete puller.

- It is strongly suggested to work always with the legs placed in the lowest possible position. It will reduce legs deformation.



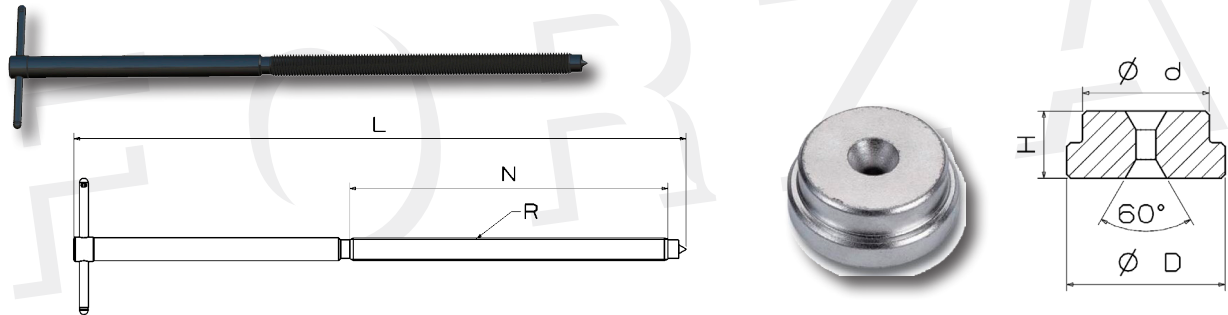
- It is only necessary to release the screw of the leg in case it is required to change the position of the jaw. Without taking it out, moving it til place the screw in other leg hole. It is highly recommended to do it leg by leg



- Due to safety reason, do not exceed the manometer red part.
- Because of the size/weight, be sure that the puller si perfectly centered and that three legs are perfectly placed.

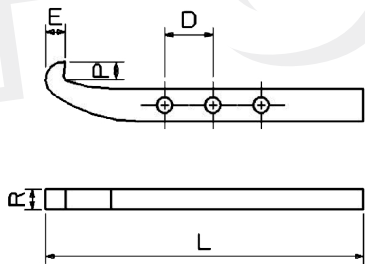
5. MECANICAL PART, BREAKDOWN

Spindle and Point protector

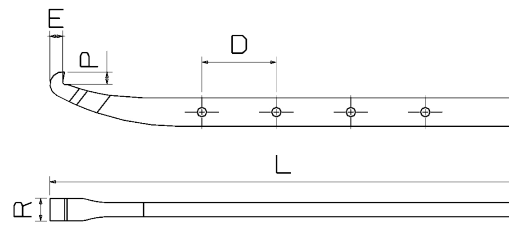


Reference	Spindle	L	N	R	Protector	Ød	ØD	H
1110H	111083	400	225	3/4"UNF 16h	111037	16,5	38	21
1118H	111883	670	348	1"UNC 8h	111837	32	40	17
1130H	113083	790	450	1-1/4"UNC 7h	113037	38	44	18
1152H	115283	975	550	1-5/8"UNS 5,5h	113037	38	44	18
1195H	119583	993	558	2-1/2"UN 8h	119537	45	55	30

Jaws



Pata larga 06



Pata extra larga 16

Ref jaw	P	R	E	L	D
131006	15	25	12,5	436	83
131016	15	25	12,5	516	83
131706	17,5	31	15,5	550	115
131716	17,5	31	15,5	665	115
133006	24	41	22	698	125
133016	24	41	22	823	125
135206	27	50	30	1060	150
135216	27	50	30	1210	150



S.L. de Herramientas Especiales Forza
C/ San Miguel de Atxa, 24
01010 Vitoria
www.forza.es

